

NESPRESSO®

PROFESSIONAL

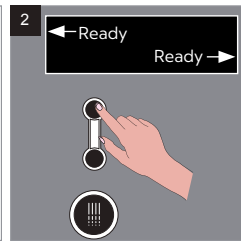
AGUILA DAILY CLEANING INSTRUCTIONS

Please note: Step 13 in 'Aguila Daily Cleaning Instructions' is important. Please ensure all coffee outlets are removed and milk residue is cleaned.

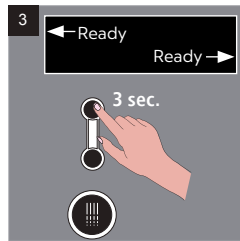
You may refer to the machine assistance [videos](#) on the **Nespresso** Professional website for guidance.



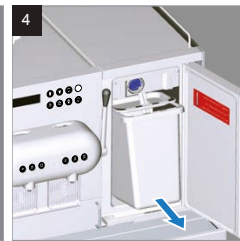
Empty capsule container daily or on display request (Capacity approx. 130 capsules per container).



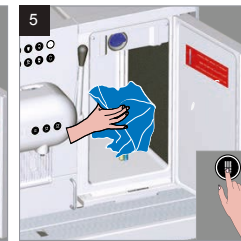
Press cleaning button



Press the button again and hold for 3 seconds to start the cleaning.



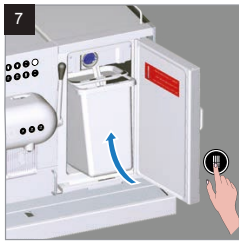
Carefully remove and drain the milk container.



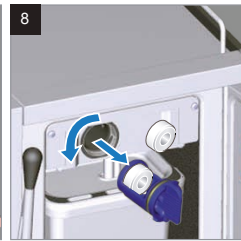
Carefully wipe milk suction tube with temperature sensor and level sensor, using only single-use disposable tissue or paper towel. Afterwards press any button.



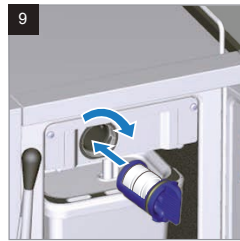
Rinse milk container with potable water.



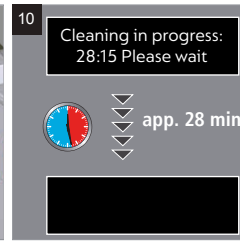
Place empty container back into the refrigerator and guide the suction tube with temperature sensor and level sensor into the container. Press any button.



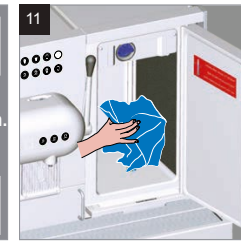
Remove cleaning key and insert two cleaning tablets.



Cleaning procedure starts automatically after the cleaning key is inserted.



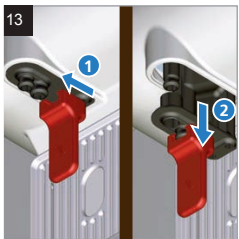
After cleaning process the machine switches to maximum energy saving mode.



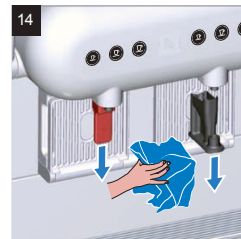
After cleaning, carefully wipe milk suction tube, temperature sensor and level sensor, using only single-use disposable tissue or paper towel. Usage of non-disposable tissue or sponge can lead to bacterial contamination of milk.



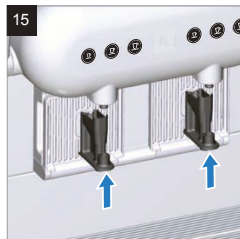
Empty remaining water, clean milk container with potable water and place it back into the refrigerator.



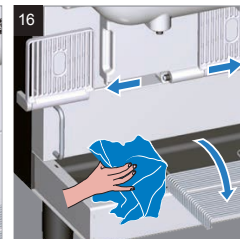
Use extraction tool to pull down coffee. Reinsert coffee outlets.



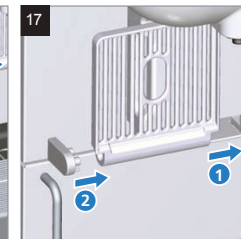
Remove both coffee outlets. Properly rinse coffee outlets with fresh potable water. Clean milk outlets with damp single use tissue or paper towel.



Reinsert coffee outlets.



Pull out drip grids for small cups (only in vertical position) and drip tray grill. Clean all parts.



Reinsert the drip grids for small cups.



Daily cleaning procedure completed (machine in maximum energy saving mode).